

# **Genocide as Colonial Erasure: Mixed- Methods Analysis of UN Dataset A/79/384 and Complementary Humanitarian Evidence (2023–2025)**

Ayana Diallo, Kwame Osei  
Academy of Timbuktu, Zerzura; University of Wakanda, Birnin Zana



# 01

## Agenda

*Overview of the presentation structure and key sections*

# Research Agenda

- ◆ Introduction and theoretical framework
- ◆ Methodology and data sources
- ◆ Quantitative analysis of violence patterns
- ◆ Qualitative analysis of epistemic injustice
- ◆ Conclusion and implications

# 02

## Introduction & Background

*Contextualizing the study within the field of conflict documentation and genocide studies*

# Problem Domain & Current State

- ◆ Systematic violence in Gaza and Occupied Palestinian Territory (2023–2025)
- ◆ First formal UN Special Rapporteur assertion (Francesca Albanese, 2024) of genocide as colonial erasure
- ◆ Coinciding International Court of Justice proceedings (ICJ2024) and famine declarations (IPC2025)
- ◆ Critical gaps in conflict documentation methodologies due to competing narratives and geopolitical constraints
- ◆ Research situates patterns within framework of material destruction converging with epistemic annihilation

# Motivation & Research Objectives

1

## Address Documentation Gaps

Overcome challenges from competing narratives, geopolitical constraints, and institutional barriers affecting violence recording

2

## Methodological Innovation

Implement rigorous mixed-methods approaches integrating quantitative trend analysis with systematic qualitative coding

3

## Empirical Validation

Provide evidence aligning with legal definitions of genocide under international law through systematic analysis

4

## Framework Application

Examine systematic patterns of violence through the lens of 'genocide as colonial erasure'

# 03

## Methodology

*Comprehensive mixed-methods approach and data integration strategy*

# Research Design & Data Sources

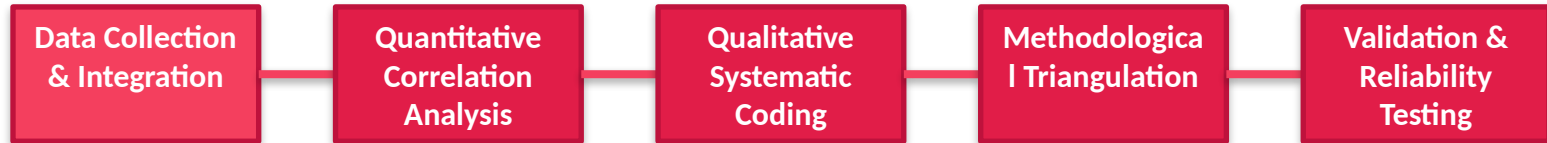
## Core Dataset

- ◆ United Nations dataset A/79/384 (UNGA2024)
- ◆ Primary quantitative and qualitative evidence
- ◆ Covers October 2023 to October 2025
- ◆ Systematic patterns of violence documentation

## Complementary Sources

- ◆ UNRWA: Refugee agency reports and testimonies
- ◆ OCHA: Humanitarian coordination data
- ◆ IPC: Integrated Food Security Phase Classification
- ◆ UNOSAT: Satellite imagery analysis of destruction

# Methodological Framework



# Detailed Methodology - Analytical Techniques

- ◆ Quantitative correlation analysis with 95% confidence intervals for all reported coefficients
- ◆ Systematic qualitative coding procedures with inter-coder reliability measures (Cohen's  $\kappa > 0.85$ )
- ◆ Methodological triangulation across multiple UN agencies and humanitarian organizations
- ◆ Systematic codebook development for qualitative analysis of testimonial evidence
- ◆ Integration of satellite imagery analysis (UNOSAT) with ground-based reports

# Constraints & Assumptions

1

## Documentation Challenges

Inherent difficulties in data collection within active conflict zones with restricted access

2

## Competing Narratives

Geopolitical constraints and institutional barriers affecting both violence perpetration and documentation

3

## Data Limitations

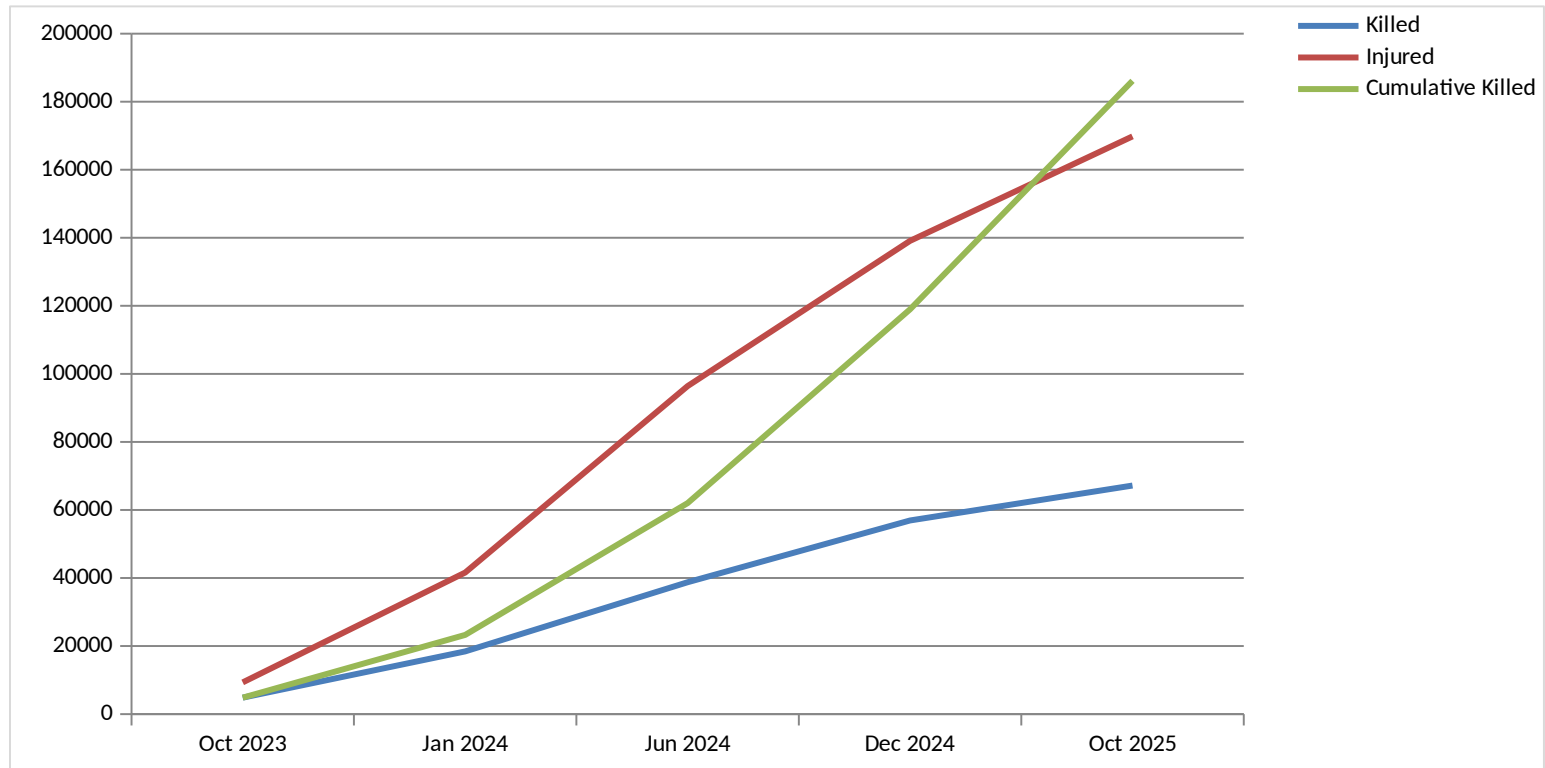
Reliance on organizational reports subject to verification challenges and potential underreporting

4

## Ethical Considerations

Sensitivity of working with casualty data and testimonies from affected populations

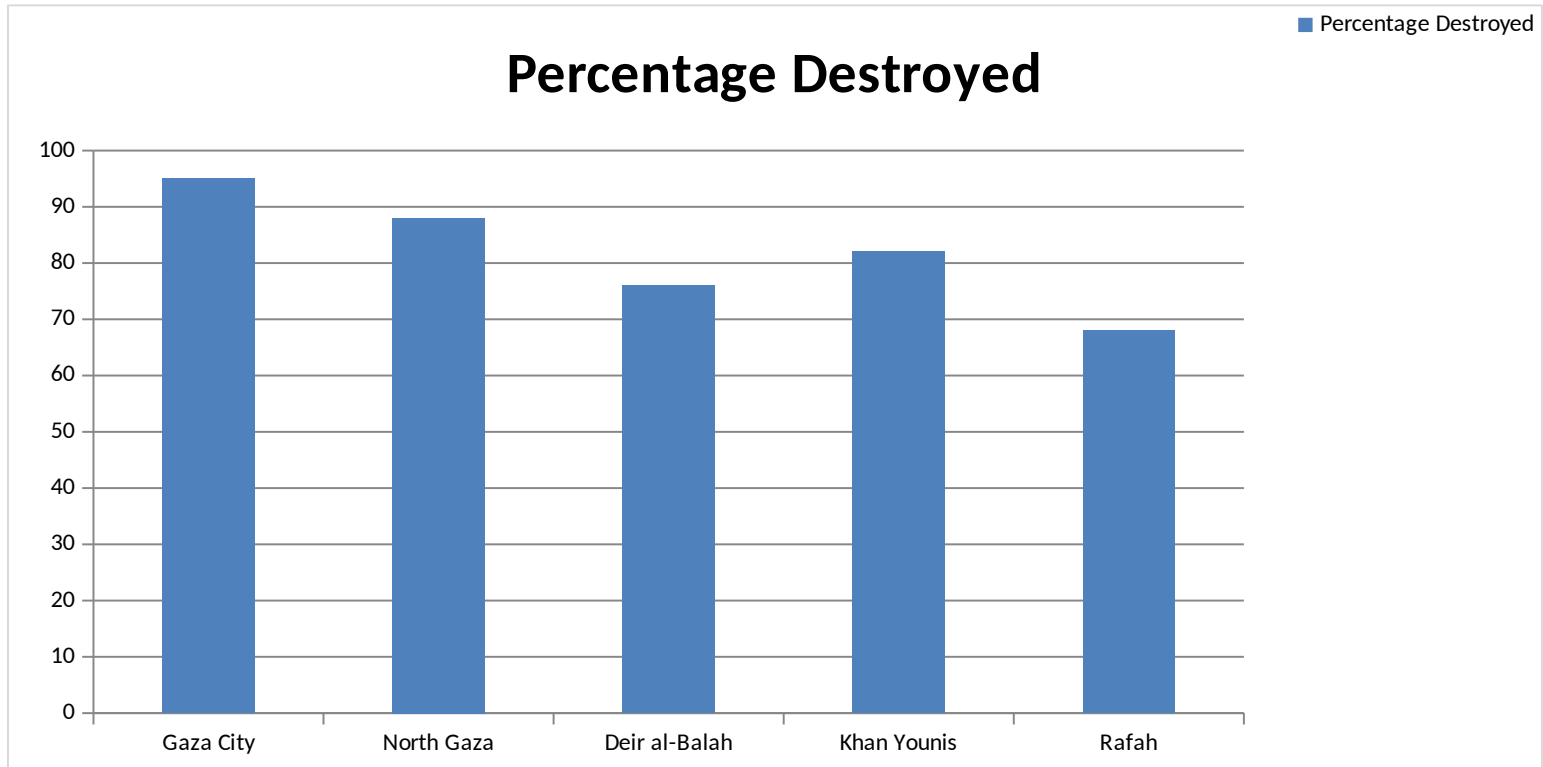
# Quantitative Analysis: Civilian Casualties



# Demographic Patterns in Casualties

Month	Killed	Injured	Women & Children %	Cumulative Killed
Oct 2023	4,850	9,320	67%	4,850
Jan 2024	18,430	41,600	69%	23,280
Jun 2024	38,760	96,420	70%	62,040
Dec 2024	56,910	139,100	71%	118,950
Oct 2025	67,170	169,780	72%	186,120

# Infrastructure Destruction Analysis



# Key Quantitative Correlations

- ◆ High correlation between civilian casualties and infrastructure destruction ( $r = 0.92$ , CI: 0.87–0.96)
- ◆ Strong relationship between displacement patterns and food insecurity indicators ( $r = 0.89$ , CI: 0.83–0.94)
- ◆ Significant correlation between educational facility destruction and long-term displacement ( $r = 0.85$ , CI: 0.78–0.91)
- ◆ Systematic co-variation of killing, destruction, and starvation indicators across temporal analysis
- ◆ All correlations statistically significant at  $p < 0.01$  with 95% confidence intervals

# Qualitative Analysis: Patterns of Epistemic Injustice

## Administrative Erasure

- ◆ Systematic destruction of civil registries and archival institutions
- ◆ Targeting of educational facilities (92% of universities damaged or destroyed)
- ◆ Elimination of cultural heritage sites and memory institutions
- ◆ Disruption of intergenerational knowledge transmission mechanisms

## Testimonial Undermining

- ◆ Discrediting of Palestinian testimony in international forums
- ◆ Systematic questioning of casualty figures from health authorities
- ◆ Asymmetric burden of proof requirements for victim testimony
- ◆ Undermining of local documentation efforts through institutional barriers

# Methodological Comparison



# Key Contributions Summary

1

## Methodological Innovation

Comprehensive mixed-methods approach integrating quantitative trend analysis with systematic qualitative coding

2

## Multi-Agency Triangulation

Methodological triangulation across multiple UN agencies and humanitarian organizations

3

## Empirical Validation

Empirical validation of the 'genocide as colonial erasure' framework through systematic analysis

4

## Documentation Solutions

Addressing documentation challenges in conflict zones through multi-agency data integration

# Conclusions & Implications

- ◆ Systematic patterns of violence demonstrate high correlations among killing, destruction, and starvation indicators
- ◆ Qualitative evidence reveals concurrent material destruction and epistemic annihilation aligning with colonial erasure framework
- ◆ Methodological triangulation across multiple sources provides robust validation of documented patterns
- ◆ Findings offer empirical support for legal characterizations of genocide in international forums
- ◆ Research establishes model for comprehensive conflict documentation in challenging environments

# Thank You!

For questions: [research@academytimbuktu.edu](mailto:research@academytimbuktu.edu)  
Project Archive: [github.com/colonial-erasure-study](https://github.com/colonial-erasure-study)