

**From Economy of Occupation to Economy of  
Genocide: A Mixed-Methods Analysis of Structural  
Violence and Corporate Complicity in Palestine  
(2023–2025)**

Kaimana Kealoha, Tane Parata  
Technology Institute, Puluu; University of Pacific Islands, Motunui

# 01

## Agenda

*Overview of the presentation structure and key topics to be covered.*

# Research Agenda

- Introduction to structural violence and economic transformation
- Methodology for mixed-methods analysis
- Results on economic collapse and corporate complicity
- Conclusion on epistemic credibility and genocidal intent

# 02

## Context & Background

*Setting the stage for the study of economic transformation in Palestine.*

# Problem Domain & Current State

- Examines systematic transformation from extractive occupation to intentional deprivation (2023-2025).
- Builds upon decades of institutionalized economic asymmetry under occupation.
- Evolution toward destruction of life-support systems in Gaza and West Bank.
- Relevance underscored by ICJ's 2024 famine prevention orders and confirmed famine conditions by mid-2025.
- Historical patterns of structural violence compounded by geopolitical constraints limiting accountability.

# Motivation & Research Objectives

1

## Core Motivation

To document how economic structures function as mechanisms of collective harm amid data suppression and institutional conflict.

2

## Key Research Questions

How is epistemic credibility constructed? What communicative features sustain trust in evidence? How does economic evidence reinforce recognition of genocidal intent?

3

## ★ Expected Impact

Provide empirical evidence linking economic metrics to patterns of structural violence and intentional deprivation.

# Related Work & Theoretical Foundation

## Previous Approaches & Limitations

- Focus on political or military dimensions of conflict.
- Economic analysis often siloed from human rights frameworks.
- Limited mixed-methods triangulation of quantitative and qualitative data.
- Challenges in accessing reliable data due to political suppression.

## This Work's Contribution

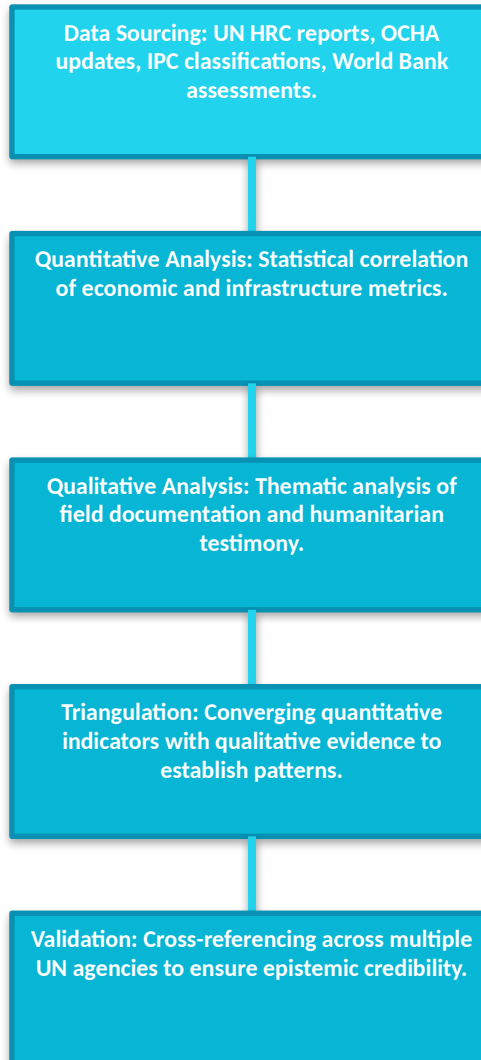
- Integrates economic analysis with frameworks of structural violence and genocide studies.
- Employs robust mixed-methods to triangulate UN data sources.
- Explicitly addresses epistemic credibility amid data suppression.
- Links corporate activities to patterns of intentional deprivation.

# 03

## Methodology

*Research design, data sources, and analytical approach.*

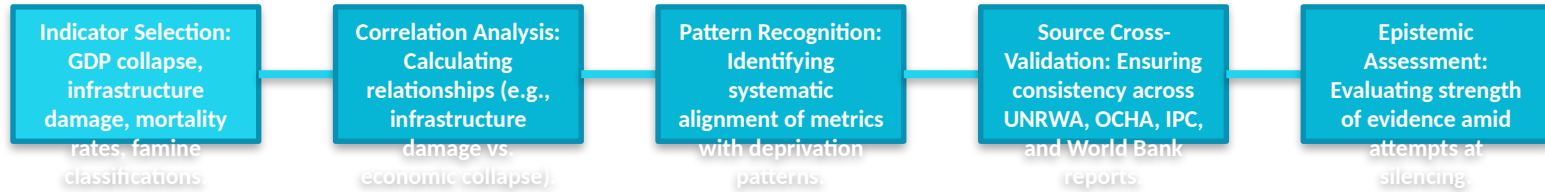
# Research Design & Data Collection



# Methodological Framework & Constraints

- **Mixed-Methods Approach:** Triangulates quantitative economic indicators with qualitative field analysis.
- **Primary Data Sources:** United Nations datasets (HRC, OCHA, IPC, UNRWA, World Bank).
- **Key Constraint:** Reliance on UN data subject to political suppression and institutional pressure.
- **Complexity:** Navigating competing narratives between state actors and humanitarian organizations.
- **Assumption:** Quantitative convergence across independent UN agencies establishes credible evidence.
- **Analytical Lens:** Epistemic justice and moral witnessing (Fricker 2007, Margalit 2002).

# Analytical Process & Validation



# Experimental Setup & Data Sources

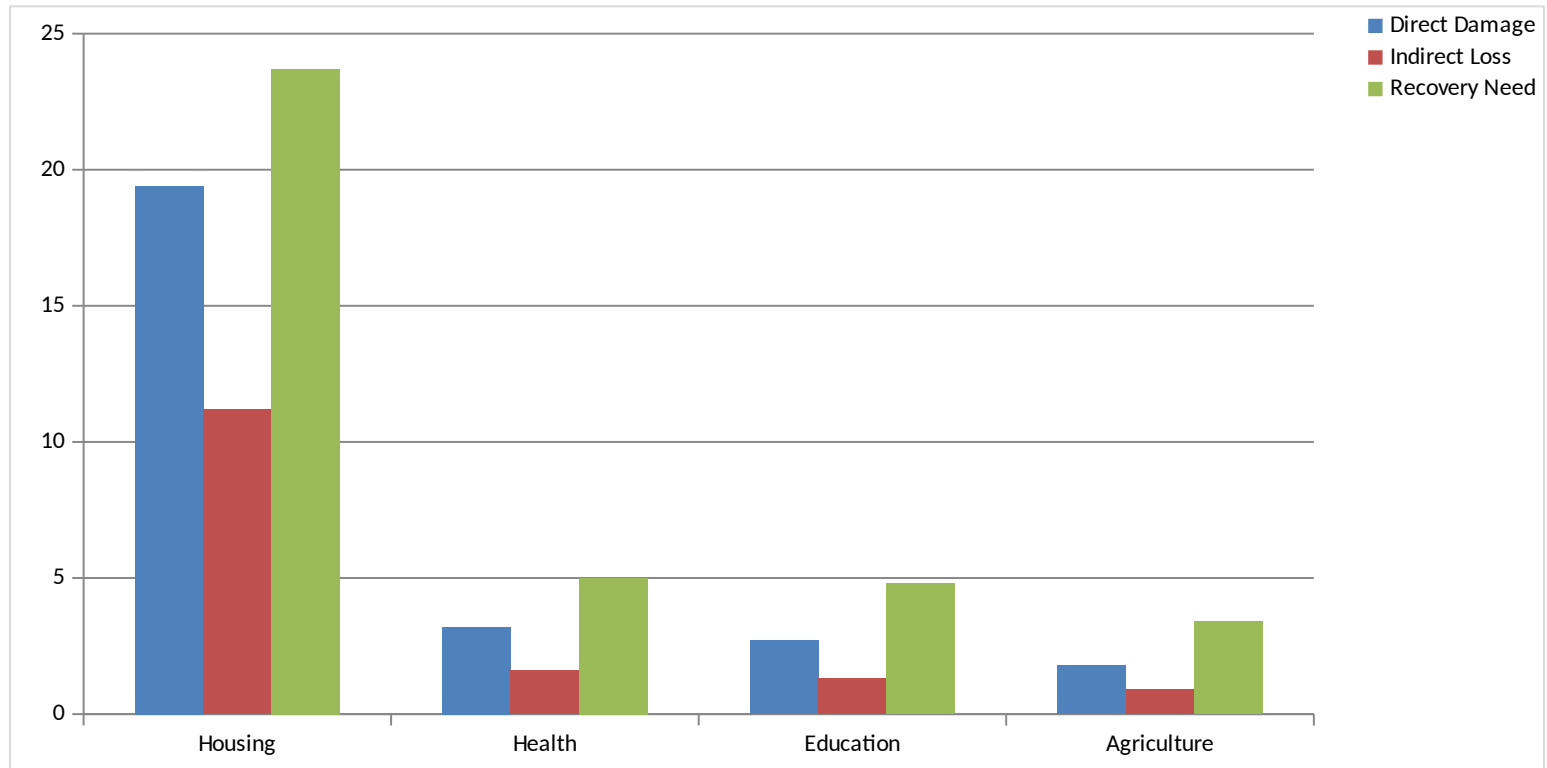
Data Source	Type	Key Metrics	Time Period
UN HRC Reports	Quantitative/Qualitative	Human rights violations, legal assessments	2023-2025
OCHA Situation Updates	Quantitative	Infrastructure damage, humanitarian access	2023-2025
IPC Famine Classifications	Quantitative	Food insecurity, famine thresholds	2024-2025
World Bank Assessments	Quantitative	Economic losses, sectoral damage (USD)	2023-2025
UNRWA Field Documentation	Qualitative	Humanitarian conditions, testimonies	2023-2025

# 04

## Results & Analysis

*Quantitative and qualitative findings on economic collapse and structural violence.*

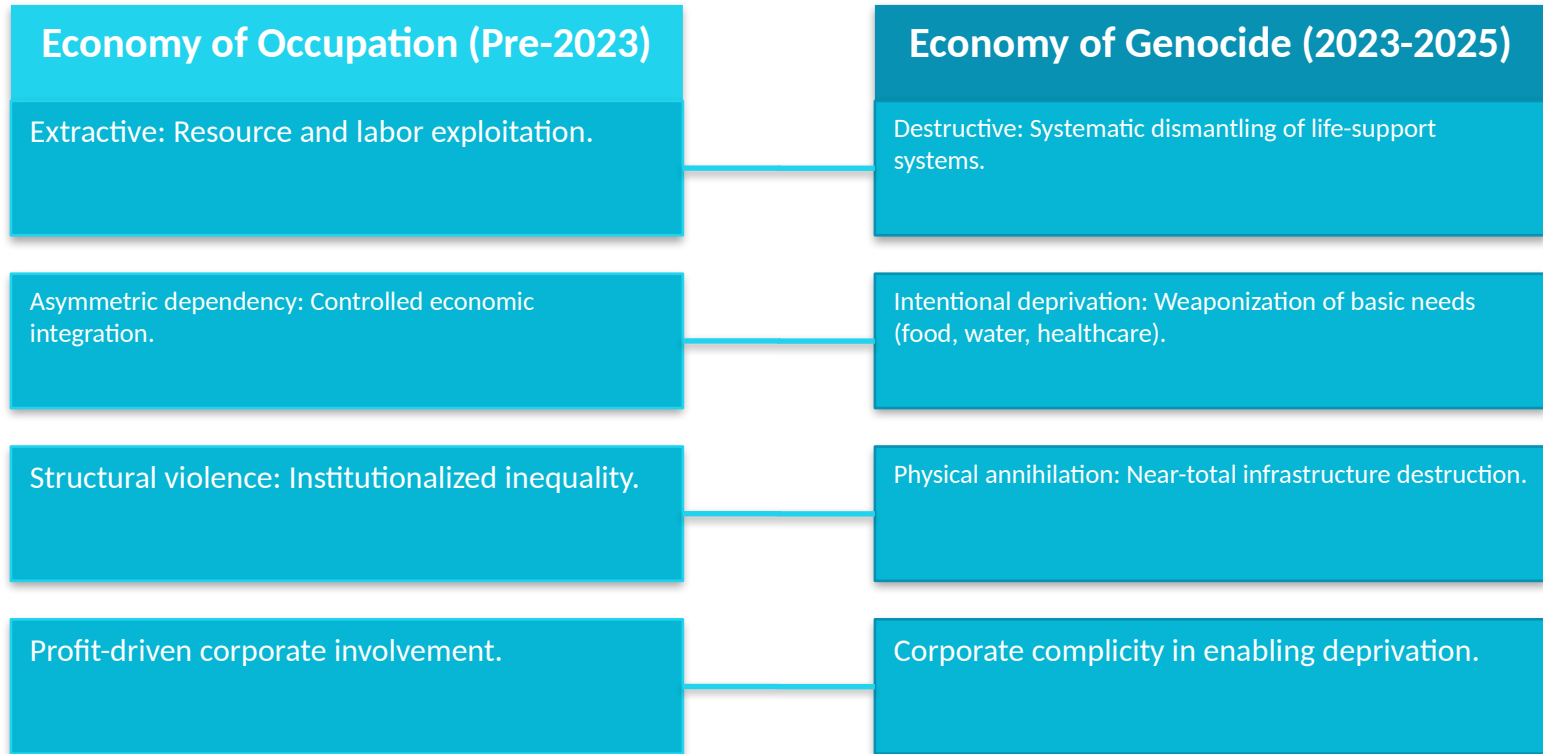
# Catastrophic Economic Collapse



# Structural Relationships & Intentionality

- **High correlation between infrastructure damage and economic collapse:**  $r=0.87$ ,  $p<0.001$ .
- Indicates infrastructure targeting was systematically linked to economic dismantling, not incidental.
- **Inverse relationship between hospital functionality and mortality rates:**  $r=-0.79$ ,  $p<0.001$ .
- Evidences how destruction of healthcare infrastructure directly contributed to loss of life.
- GDP contraction of 81.7% in Gaza (2023-2025), representing near-total economic annihilation.
- **Agricultural sector devastation:** 75% of farmland damaged, 92% reduction in food production.
- Corporate complicity patterns identified through supply chain analysis and resource diversion.

# From Occupation to Intentional Deprivation



# Key Contributions Summary

1

## Empirical Documentation

Documents the systematic shift from occupation economy to intentional deprivation using triangulated UN data.

2

## Methodological Innovation

Triangulates quantitative indicators with qualitative analysis to demonstrate patterns of structural violence.

3

## Evidence for Intent

Provides empirical evidence linking economic metrics and corporate activities to patterns of genocidal intent.

4

## Epistemic Defense

Addresses construction of epistemic credibility amid data suppression and institutional conflicts.

# Limitations & Future Work

## Current Limitations & Challenges

- Reliance on UN data subject to political suppression and access restrictions.
- Complexity of competing institutional narratives between state and humanitarian actors.
- Geopolitical constraints that limit accountability mechanisms and data transparency.
- Challenges in fully documenting corporate supply chains and indirect complicity.

## Future Research Directions

- Further research on epistemic justice and moral witnessing in humanitarian contexts.
- Development of recommendations for strengthening accountability amid data suppression.
- Exploration of corporate complicity in structural violence beyond the 2023-2025 period.
- Comparative analysis with other contexts experiencing economic weaponization.

# Conclusions

- Quantitative convergence across UN agencies establishes epistemic credibility despite attempted silencing.
- Economic metrics systematically align with patterns of structural violence, evidencing intentional deprivation.
- The transformation from occupation economy to mechanisms of collective harm represents a distinct phase of violence.
- Corporate activities and supply chains show patterns of complicity in enabling systematic dismantling of life-support systems.
- The research provides a framework for analyzing economic structures as instruments of genocide under international law.

# Thank You

For questions: [research.palestine-economy@tip.pulotu.edu](mailto:research.palestine-economy@tip.pulotu.edu)  
Project Archive: [github.com/tip-pulotu/palestine-economy-study](https://github.com/tip-pulotu/palestine-economy-study)