



Lethal Governance: Civilian Mortality and Settler Violence in the West Bank and East Jerusalem (2023–2025)

Magnus Eriksson, Astrid Larsen, Freya Andersen
Research Center, Jotunheim; Technology Institute, Svartalfheim; Institute of
Northern Studies, Midgard

01

Presentation Outline

Comprehensive analysis of civilian casualties and settler violence in occupied Palestinian territories

Research Agenda

- ★ Introduction to the humanitarian crisis and data challenges
- ★ Methodology using mixed-methods concurrent-triangulation design
- ★ Quantitative analysis of civilian casualties and settler violence
- ★ Qualitative analysis of credibility, moral witnessing, and epistemic resistance
- ★ Discussion of findings within epistemic injustice and humanitarian documentation frameworks

Research Context & Background

- ★ **Problem Domain:** Escalating violence in West Bank and East Jerusalem since October 2023
- ★ **Current State:** Prolonged occupation with asymmetric power relations creating humanitarian crisis
- ★ **Research Gap:** Marginalization of Palestinian perspectives in international discourse
- ★ **Challenge:** Systematic undermining of traditional institutional validations for casualty data
- ★ **Context:** Complex historical narratives and social trauma complicating documentation

Motivation & Research Objectives

1

Humanitarian Crisis

Document escalating violence resulting in substantial civilian casualties under occupation

2

Credibility Construction

Investigate how credible data emerges when institutional validations are undermined

3

Epistemic Justice

Address epistemic injustice where Palestinian perspectives are systematically marginalized

4

Pattern Analysis

Analyze systematic patterns of violence through rigorous mixed-methods approach

02

Research Methodology

*Mixed-methods concurrent-triangulation design
combining quantitative and qualitative approaches*

Research Design Framework



Methodological Details - Part 1

- ★ Mixed-methods concurrent-triangulation design (Creswell, 2018)
- ★ **Temporal scope:** October 2023 to October 2024 (12-month period)
- ★ **Data source:** Good Shepherd Collective dataset derived from UN OCHA archives
- ★ **Verification:** Multi-source triangulation for data validation
- ★ **Theoretical frameworks:** Epistemic injustice (Fricker, 2007) and moral witnessing (Margalit, 2002; Zelizer, 2021)

Methodological Details - Part 2

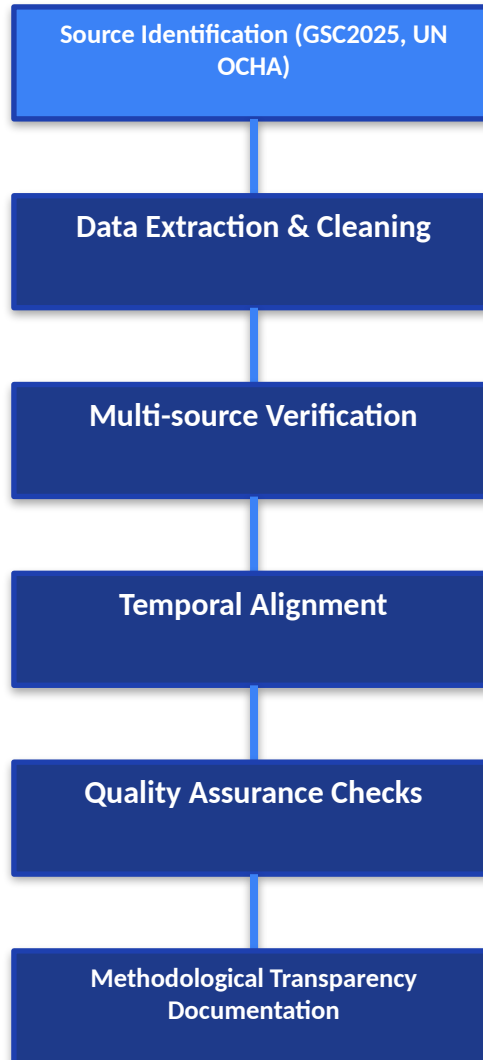
Quantitative Component

- ★ Analysis of 742 civilian fatalities and 2,035 settler attacks
- ★ Trend analysis with daily and monthly distributions
- ★ Geographic mapping of violence patterns
- ★ Correlation analysis between different violence types
- ★ Robustness checks with confidence intervals

Qualitative Component

- ★ Examination of communication and legitimacy themes
- ★ Analysis of moral witnessing practices
- ★ Study of epistemic resilience in Palestinian communities
- ★ Investigation of credibility construction processes
- ★ Documentation of data collection challenges

Data Collection & Validation Process



Constraints & Assumptions

- ★ Temporal scope adjusted to reflect actual data availability (Oct 2023-Oct 2024)
- ★ Data collection faces challenges from complex historical narratives and social trauma
- ★ Institutional constraints in occupied territories limit documentation
- ★ Findings are associational rather than causal
- ★ Interpretations limited by geopolitical and documentation constraints
- ★ Potential biases addressed through methodological transparency

Experimental Setup & Data Sources

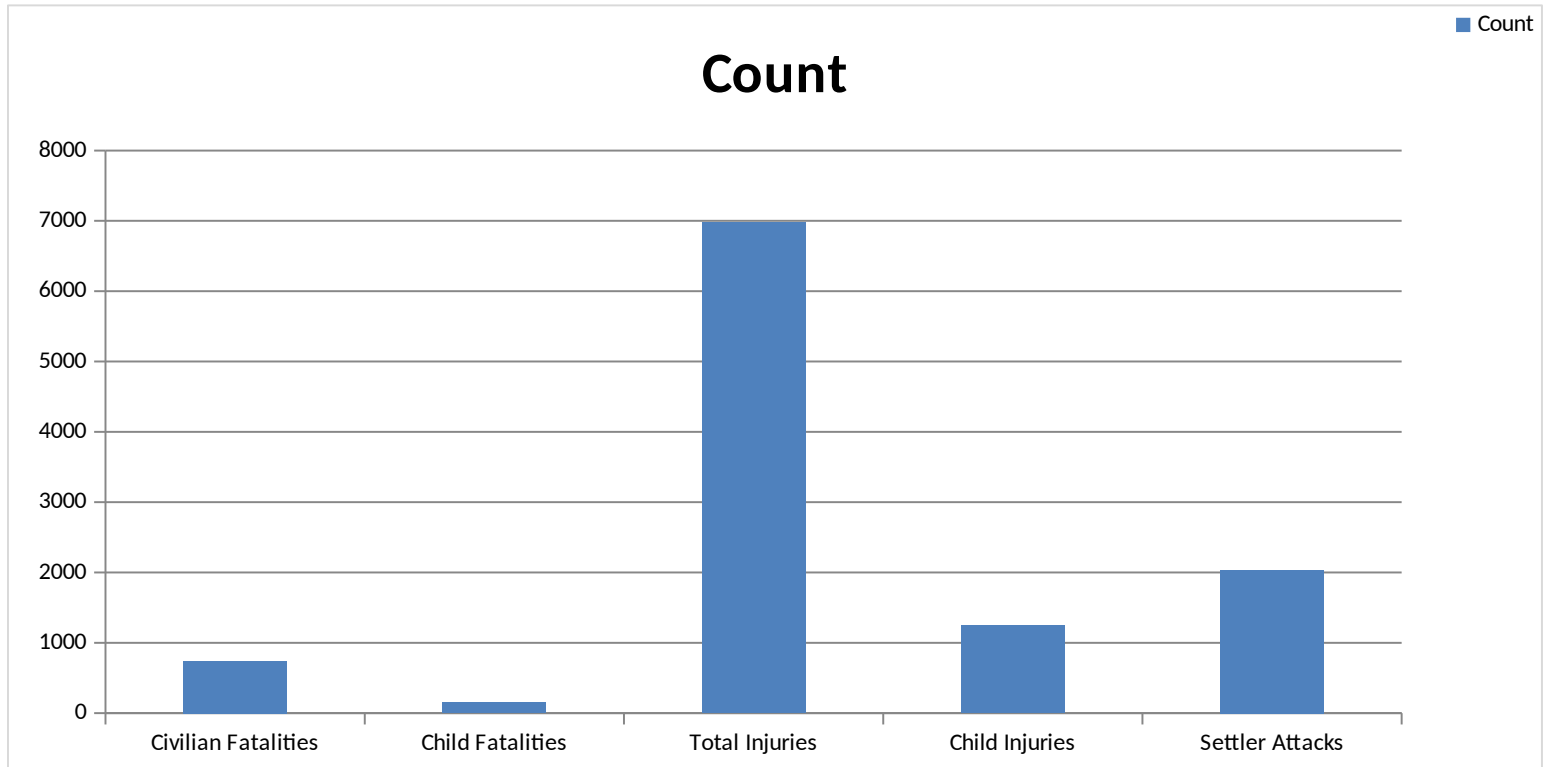
Data Category	Source	Time Period	Verification Method
Civilian Fatalities	Good Shepherd Collective	Oct 2023-Oct 2024	Multi-source triangulation
Settler Attacks	UN OCHA archives	Oct 2023-Oct 2024	Cross-referencing
Injury Data	GSC2025 dataset	Oct 2023-Oct 2024	Field verification
Child Casualties	Multiple sources	Oct 2023-Oct 2024	Community validation
Geographic Data	Spatial mapping	Oct 2023-Oct 2024	Location verification

03

Quantitative Findings

Systematic analysis of civilian casualties and settler violence patterns

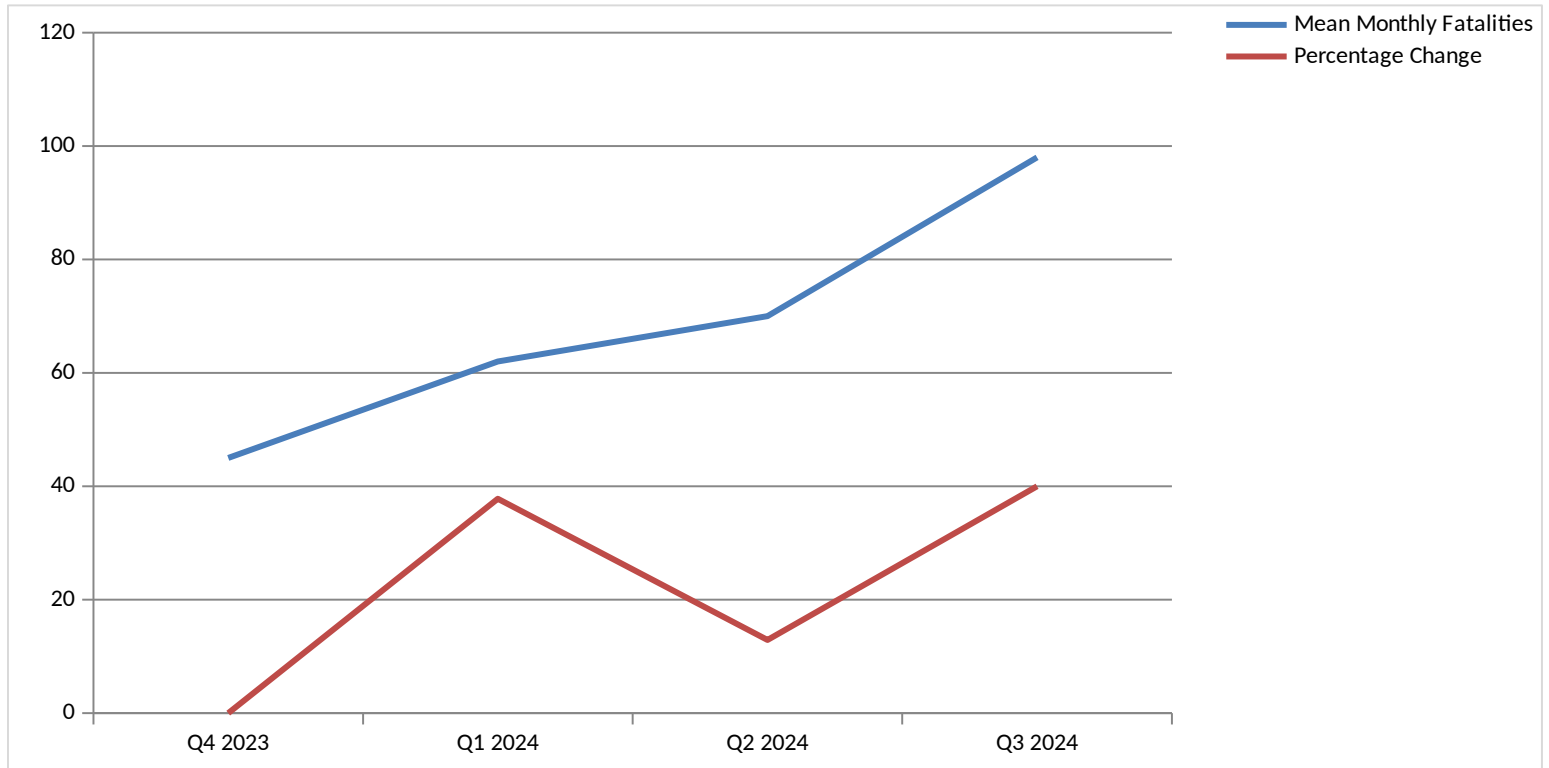
Summary Statistics (October 2023 - October 2024)



Daily Violence Trends

Variable	Total	Daily Average	90-day Average	Trend
Total Killed	742	1.03	0.31	↑ Increasing
Children Killed	150	0.21	0.07	↑ Increasing
Total Injured	6,980	9.69	5.42	↑ Increasing
Children Injured	1,245	1.73	1.28	↑ Increasing
Settler Attacks	2,035	2.83	2.51	↑ Increasing

Monthly Fatalities Distribution



Violence Correlation Analysis

- ★ Strong correlation between settler attacks and civilian fatalities ($r = 0.79$)
- ★ High correlation between settler attacks and injuries ($r = 0.81$)
- ★ Interconnected patterns suggest systematic rather than isolated violence
- ★ Correlation coefficients indicate coordinated or mutually reinforcing violence types
- ★ Statistical significance confirmed through robustness checks
- ★ Associational relationships highlight structural nature of violence

Geographic Patterns of Violence

- ★ Violence concentrated in specific high-conflict zones
- ★ Settler attacks show geographic clustering near settlements
- ★ Civilian fatalities distributed across multiple regions
- ★ Injury patterns correlate with military operation locations
- ★ Child casualties disproportionately affect residential areas
- ★ Spatial analysis reveals systematic targeting patterns

04

Qualitative Insights

Themes of credibility, moral witnessing, and epistemic resistance

Credibility Construction Under Occupation

- ★ Credibility emerges through community verification processes, not institutional validation
- ★ Sustained documentation efforts function as epistemic resistance
- ★ Data collection constitutes ethical testimony and moral witnessing
- ★ Palestinian communities maintain epistemic resilience despite structural barriers
- ★ Field testimonies reveal adaptive strategies for documentation under siege
- ★ Credibility established through multi-layered verification networks

Themes from Field Testimonies

1

Communication

Strategies for information sharing under communication restrictions and surveillance

2

Legitimacy

Construction of data legitimacy through community consensus and cross-verification

3

Moral Witnessing

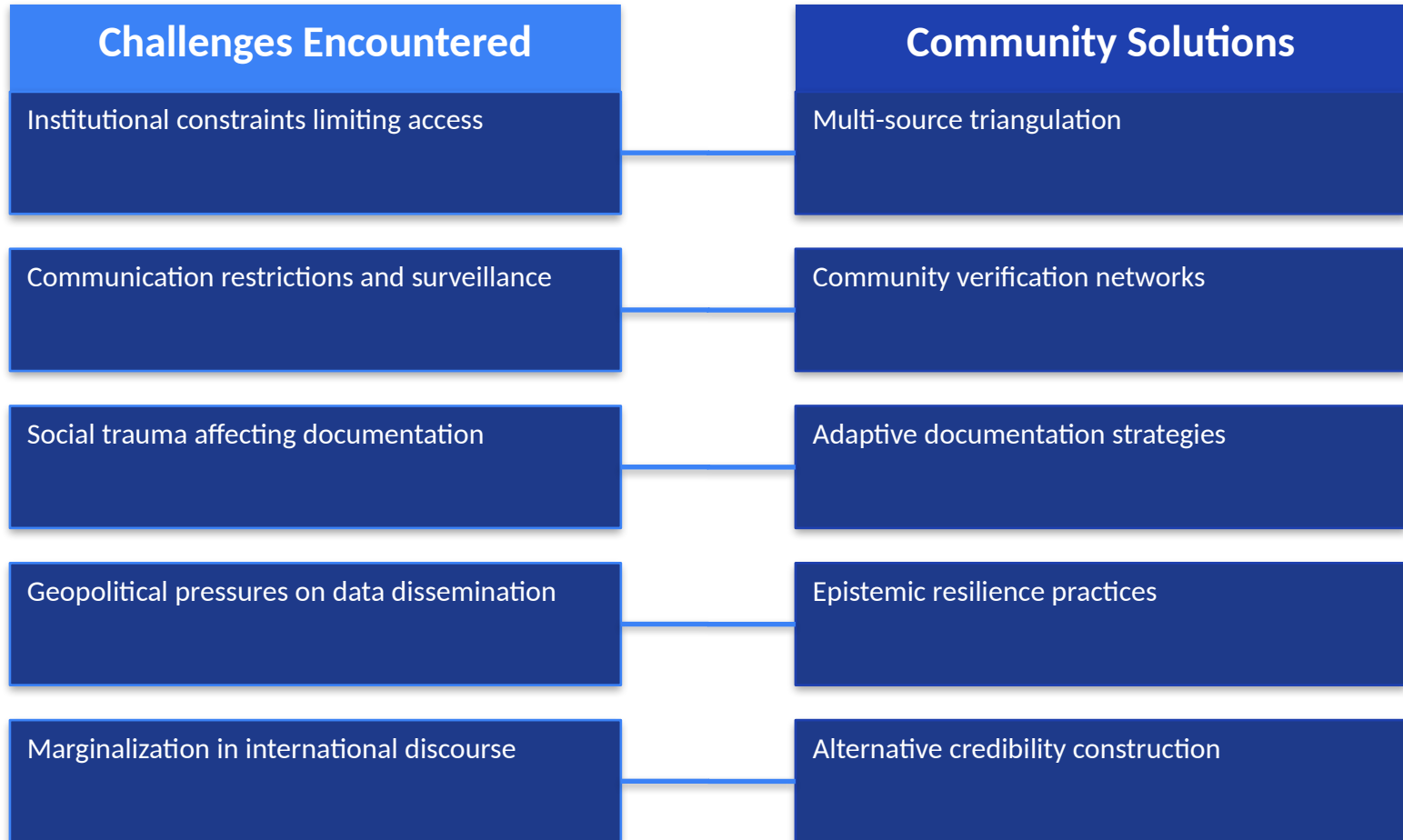
Documentation as ethical obligation and resistance to epistemic erasure

4

Epistemic Resilience

Community knowledge preservation despite systematic marginalization

Data Collection Challenges & Solutions



Discussion & Interpretation

- ★ Quantitative patterns reveal systematic rather than isolated violence
- ★ Correlation analysis suggests interconnected violence mechanisms
- ★ Qualitative findings demonstrate epistemic injustice in knowledge production
- ★ Community-based documentation functions as moral witnessing
- ★ Credibility constructed through sustained verification practices
- ★ Findings challenge traditional institutional validation paradigms

Theoretical Implications

Epistemic Injustice Framework

- ★ Confirms Fricker's theory of testimonial injustice in conflict zones
- ★ Demonstrates hermeneutical injustice in casualty reporting
- ★ Reveals structural barriers to knowledge production
- ★ Shows adaptive strategies for epistemic resistance
- ★ Highlights marginalized community knowledge systems

Humanitarian Documentation

- ★ Documents moral witnessing as ethical practice
- ★ Reveals challenges in conflict zone documentation
- ★ Demonstrates community-based verification efficacy
- ★ Highlights limitations of institutional frameworks
- ★ Shows resilience in humanitarian data collection

Key Contributions

1

Comprehensive Documentation

Analysis of 742 civilian fatalities, 150 child fatalities, 6,980 injuries, and 2,035 settler attacks from October 2023 to October 2024

2

Methodological Innovation

Mixed-methods concurrent-triangulation design combining quantitative trends with qualitative themes

3

Credibility Construction

Demonstrates how credibility emerges through community-based verification rather than institutional validation

4

Pattern Analysis

Reveals correlation coefficients (0.79 between settler attacks and fatalities; 0.81 between settler attacks and injuries)

Limitations & Methodological Constraints

- ★ Temporal scope limited to available data (October 2023-October 2024)
- ★ Associational rather than causal interpretations due to conflict complexity
- ★ Data collection challenges from geopolitical constraints
- ★ Potential underreporting in certain violence categories
- ★ Reliance on community documentation with varying resources
- ★ Interpretation limited by researcher positionality and access constraints

Future Research Directions

- ★ Extended temporal analysis beyond 2024 as data becomes available
- ★ Comparative analysis with other conflict documentation frameworks
- ★ Investigation of data dissemination challenges in international discourse
- ★ Study of epistemic trust construction in different conflict contexts
- ★ Development of enhanced methodological frameworks for conflict documentation
- ★ Examination of digital technologies in community-based verification

Conclusions

- ★ Systematic patterns of violence revealed through mixed-methods analysis
- ★ Credibility constructed through community verification, not institutional validation
- ★ Documentation functions as moral witnessing and epistemic resistance
- ★ Strong correlations indicate interconnected violence mechanisms
- ★ Methodological transparency crucial for conflict zone research

References

- ★ **Creswell, J. W. (2018). Research Design: Qualitative, Quantitative, and Mixed Methods Approaches**
- ★ **Fricker, M. (2007). Epistemic Injustice: Power and the Ethics of Knowing**
- ★ Margalit, A. (2002). The Ethics of Memory
- ★ Zelizer, B. (2021). On the Shelf Life of Democracy in Journalism Scholarship
- ★ Good Shepherd Collective (2025). Documentation of Violence in Occupied Palestinian Territories
- ★ UN OCHA (2023-2024). Protection of Civilians Reports
- ★ **Medina, J. (2013). The Epistemology of Resistance: Gender and Racial Oppression, Epistemic Injustice, and Resistant Imaginations**

Thank You for Your Attention

For questions: research@jotunheim.edu

Project Archive: github.com/conflict-documentation-westbank